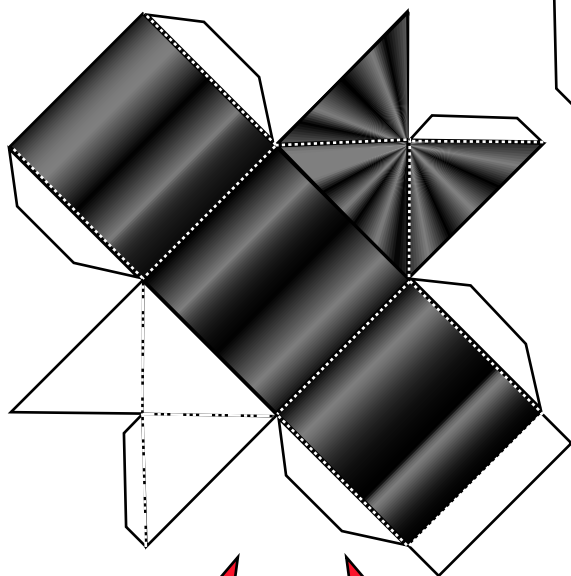
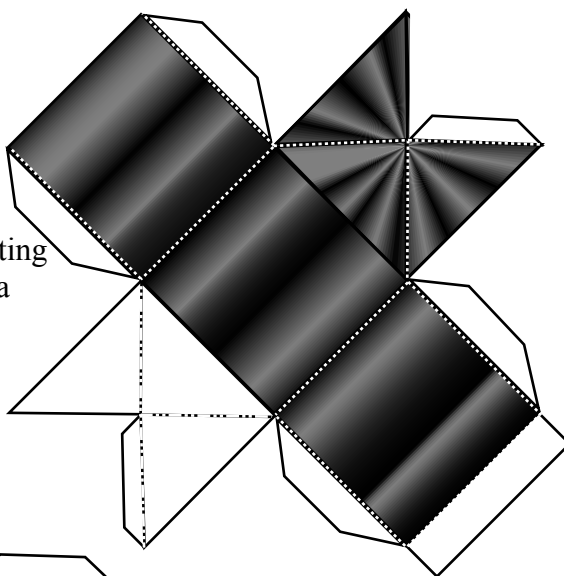
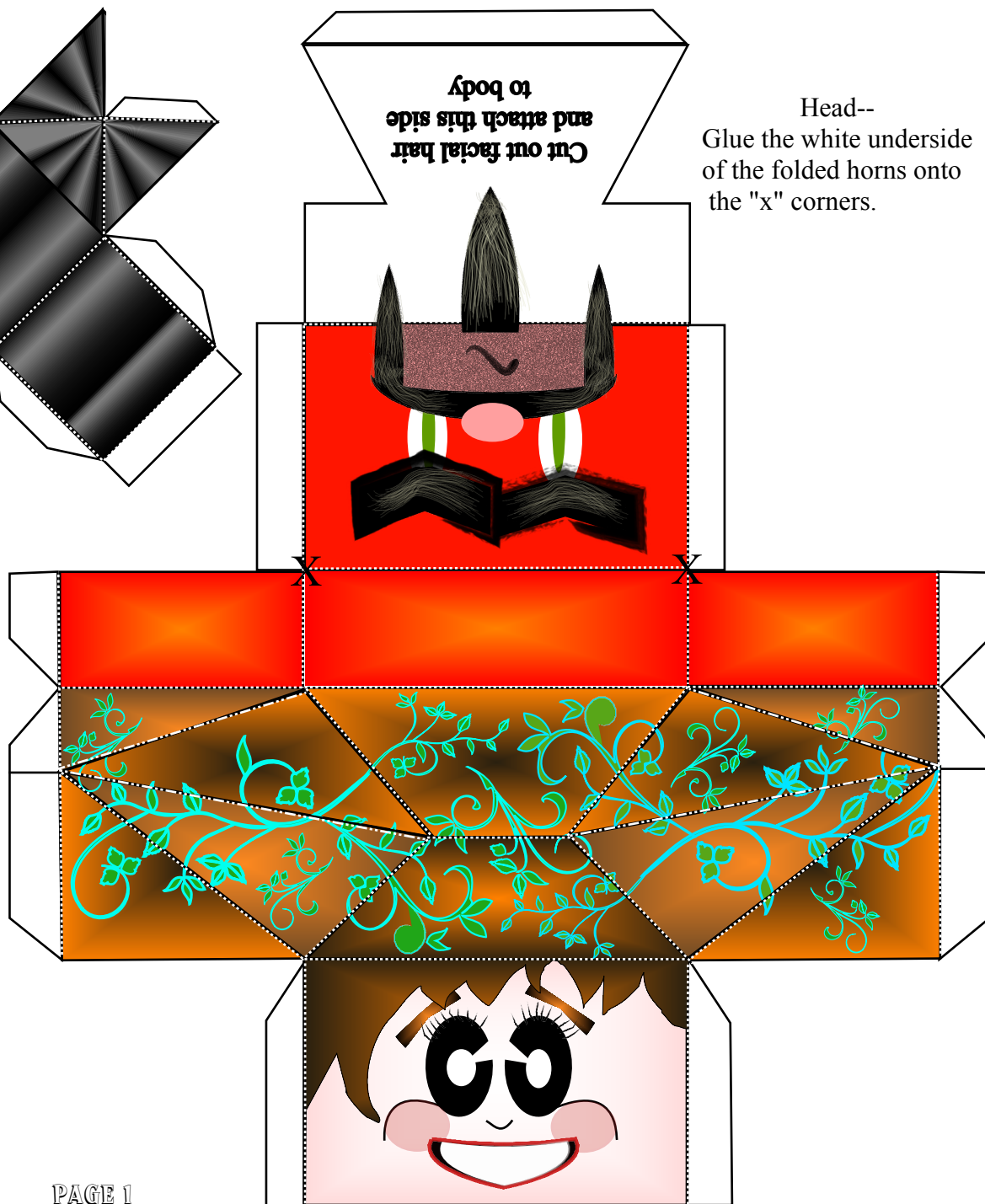


Horns--  
The black radial stripe  
areas are horn tips, pointing  
outward. The white area  
folds should make an  
"inverse pyramid" that  
folds into the horn.

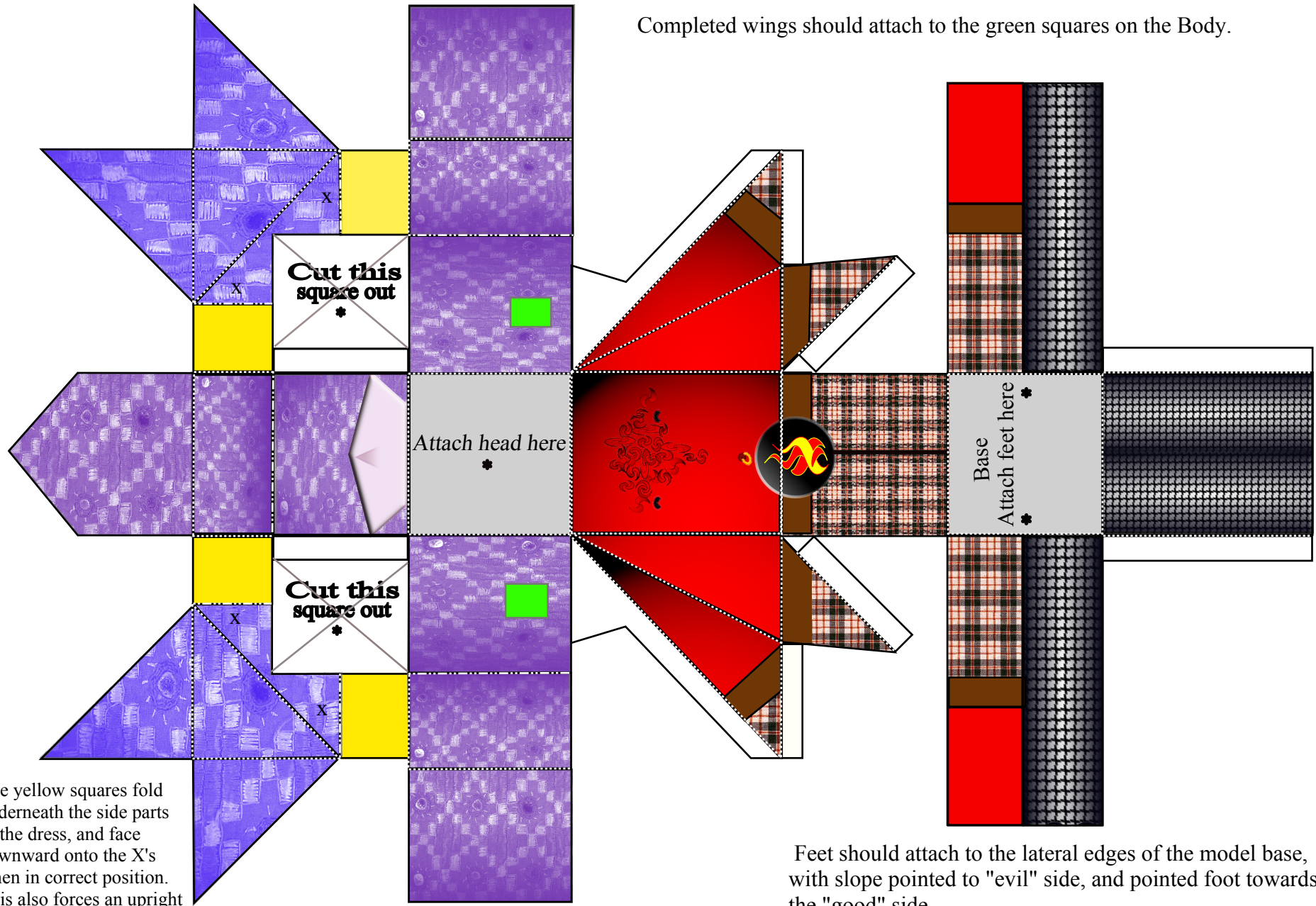


Cut out facial hair  
and attach this side  
to body

Head--  
Glue the white underside  
of the folded horns onto  
the "x" corners.



Completed wings should attach to the green squares on the Body.

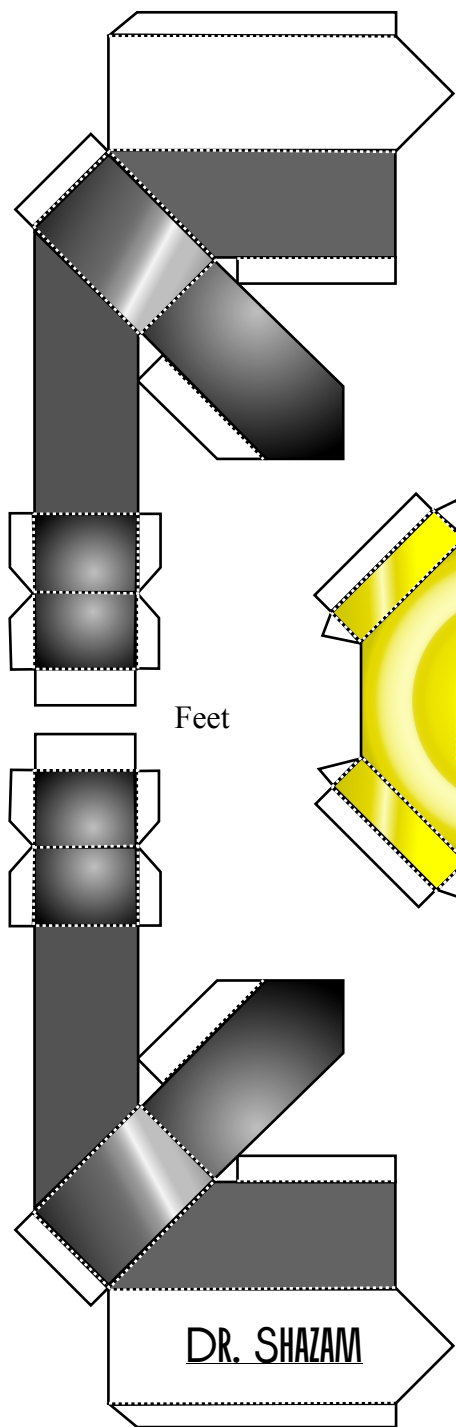


The yellow squares fold underneath the side parts of the dress, and face downward onto the X's when in correct position. This also forces an upright box to form in the center of the model.

Body

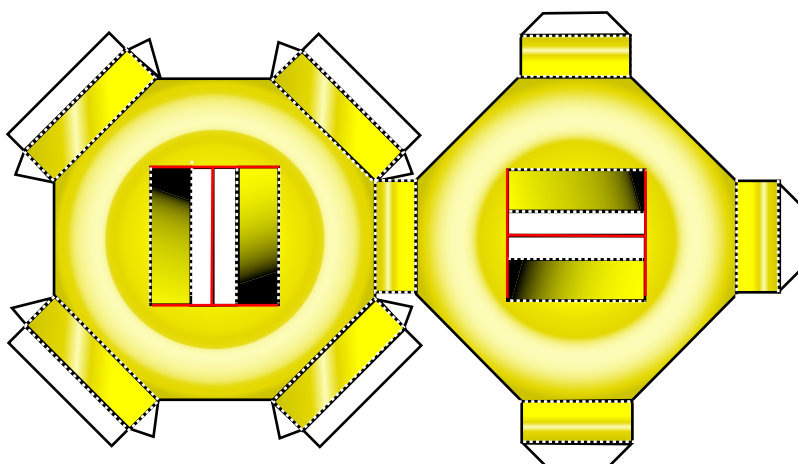
Feet should attach to the lateral edges of the model base, with slope pointed to "evil" side, and pointed foot towards the "good" side.





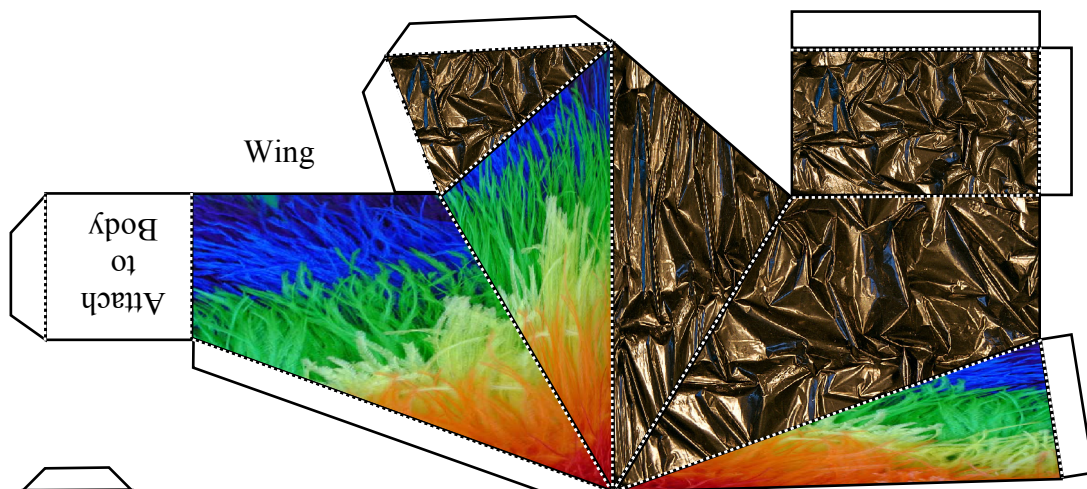
Feet

DR. SHAZAM



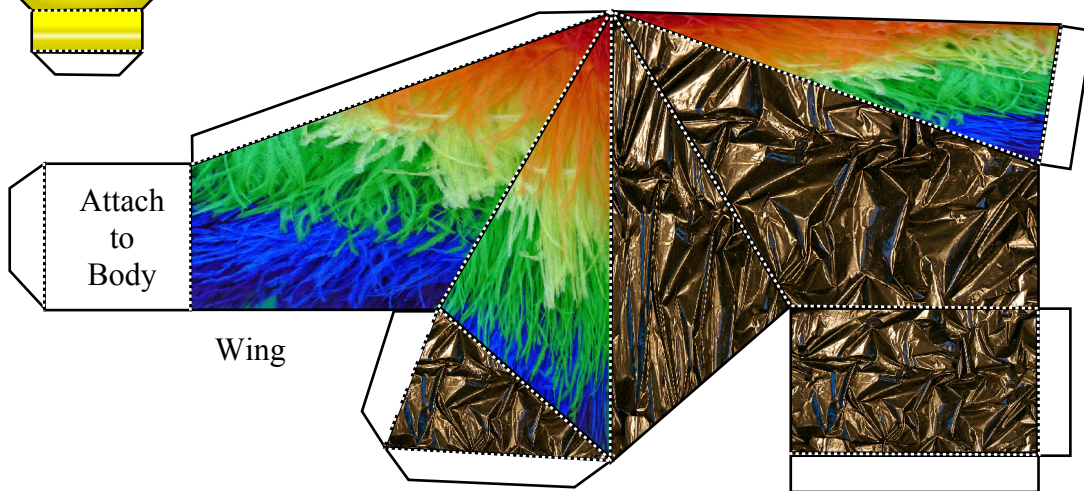
Halo

Use a hobby/craft knife to cut along red lines. The inner square of the halo folds inward to make a final "donut" shape.



Wing

Attach to Body



Wing

Attach to Body

**PAPERTOY**  
**BONANZA**  
[www.papertoybonanza.blogspot.com](http://www.papertoybonanza.blogspot.com)